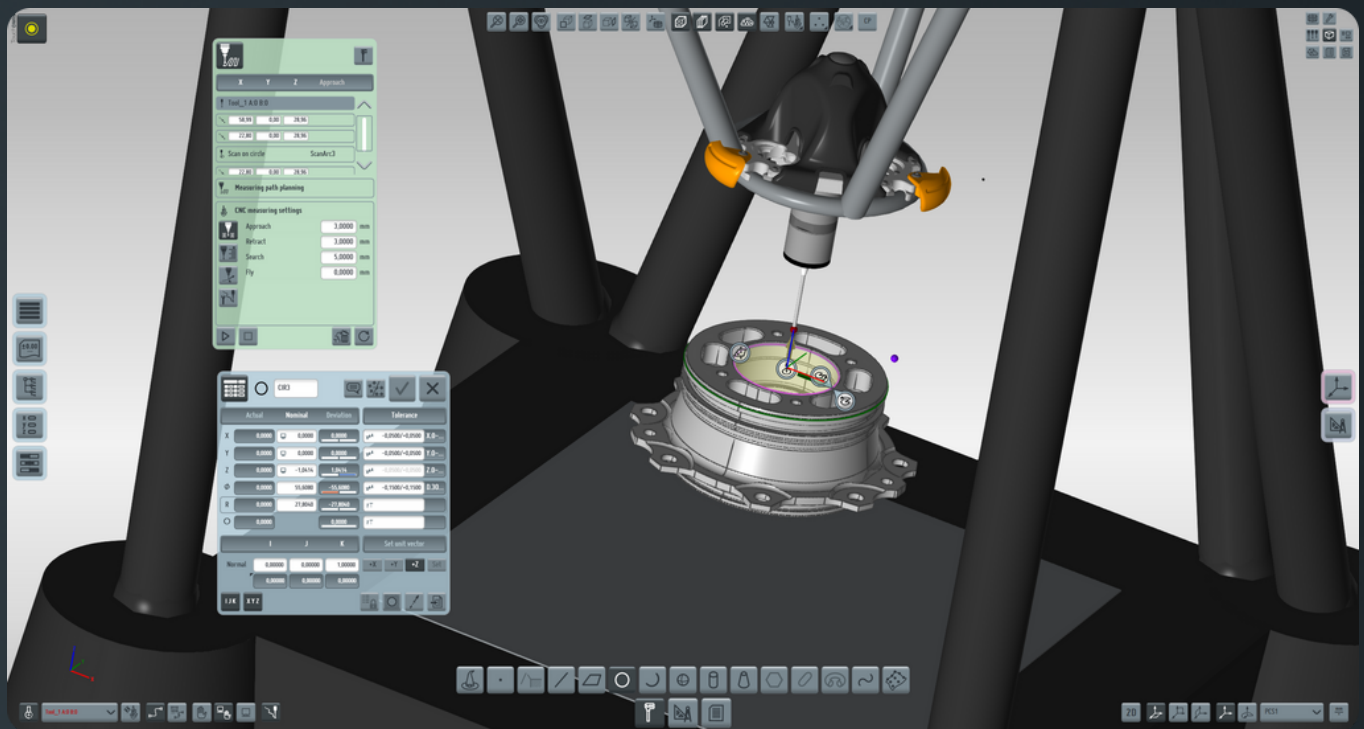


TouchDMIS

THE MEASURING TOUCH

TouchDMIS 8.0







What's new
Release notes



s.o.l.u.t.i.o.n.s

Summary

 What's new?	1
 What we have implemented/fixed	6
 Supported Hardware & Drivers	11
 PC Specifications	12

Additional notes

New TouchDMIS support channel

In order to improve the development and the support towards our distributors and customers we have activated a channel entirely dedicated to the support of TouchDMIS.

You can write us to:

support@touchdmis.com

What's new?

Here's what we have implemented in the new TouchDMIS release

LK controller integration

LK Controllers series are now integrated in **touch trigger mode** and **continuous scanning mode**



tag: integration

"Trust the process"

We have added a new qualification cycle with a new algorithm in order to optimize position and move during qualification of star probes.



tag: qualification

What's new?

New Machine Setup options

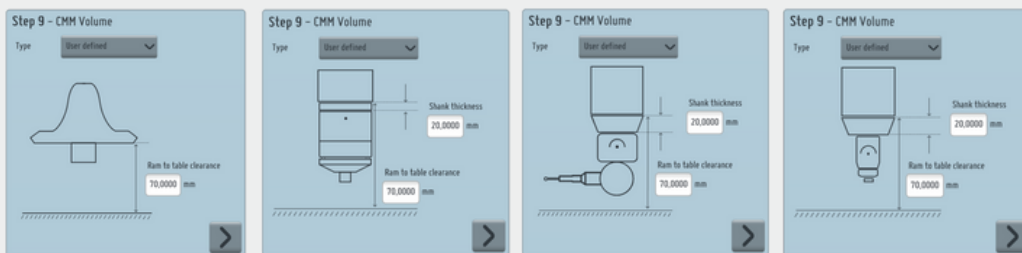
We have added new options for Machine configuration in order to improve the Machine Setup experience.

This including:

CMMs OEM selection

The screenshot shows the 'Machine' configuration screen. It includes a 'Machine' icon and label, a 'Machine' input field, a 'CMM model' section with an 'OEM' dropdown menu set to 'Coord3', a 'Machine model' dropdown menu with options 'Coord3', 'LK Metrology', 'Renishaw', and 'Aberlink', a 'Current Z value on CMM table' field, a 'Gollome position' field, and an 'Automation safety zone' field.

CMMs volume

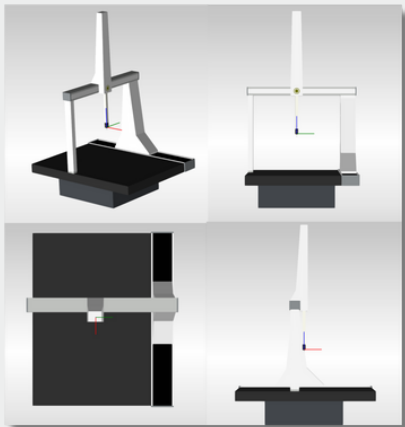


tag: machine setup

What's new?

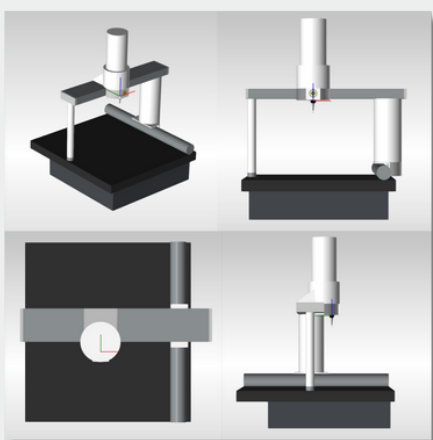
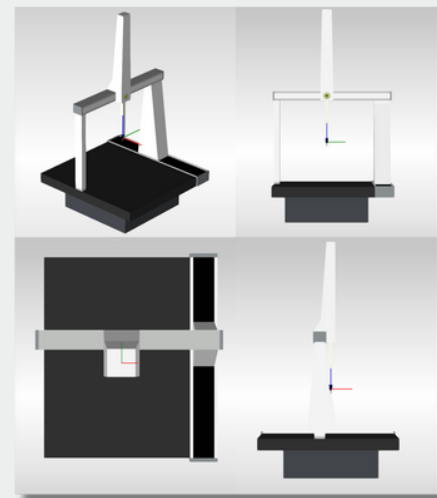
New CMM 3D models

We developed the CMM graphic models for Coord3, LK Metrology, Renishaw and Aberlink



Coord3 default model

LK Metrology default model
plus the full library of original LK
CMMs models



Aberlink default model

tag: graphical representation

What's new?

Manual Deva 037 driver

Added support for the Deva manual board. We also improved the Machine Setup experience

tag: integration

Manual Head model representation

We improved the graphical representation of the indexable manual heads (RTP20 - MH20 - MH20i and MH8)

tag: graphical representation

Effective Working Length

We added the effective working length for each probe for non-UCC controllers so that the calibration process can automatically select the best portion of the sphere to be used



New probe tip	
Name	20x4
Length	20,0000 mm
Effective working length	20,0000 mm
Diameter	4,0000 mm

tag: probe management

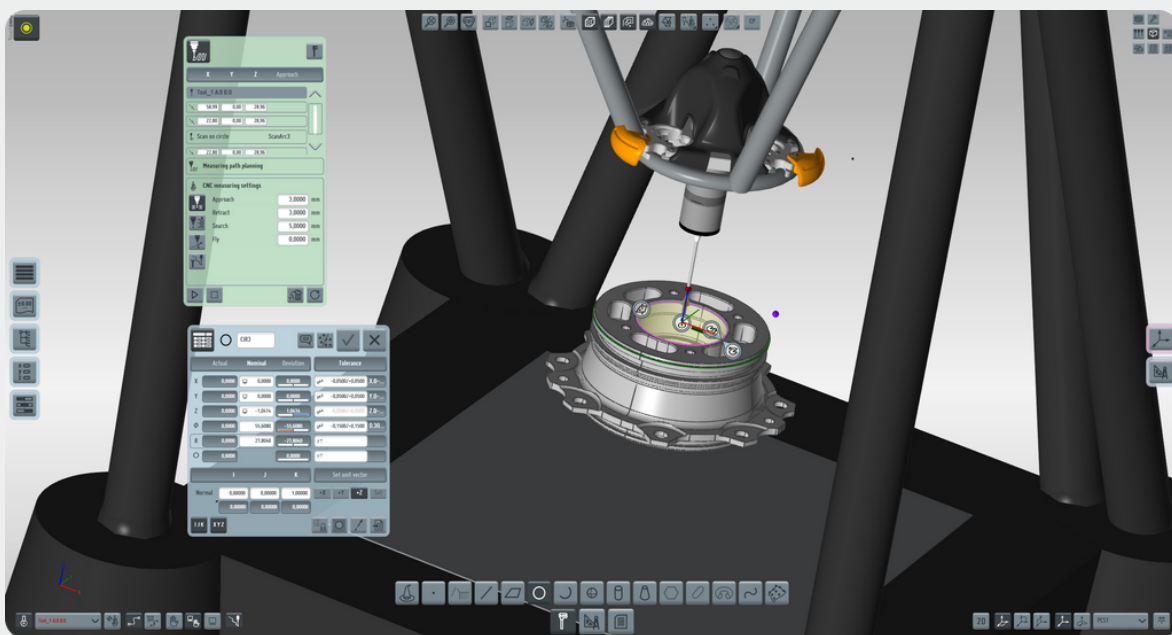
What's new?

Renishaw Equator integration

Now you can use Renishaw Equator Gauging System in TouchDMIS.

This integration lets you take the full advantage of **Renishaw Equator's innovative technology and repeatability.**

You can enable the point collection of Equator directly from the TouchDMIS interface.

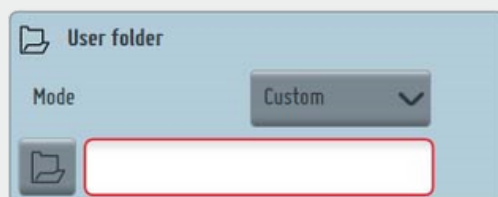


tag: integration

What's new?

Default folder selection

The user can now select whether to save a project in the last used folder or to set a default folder to store the programs.

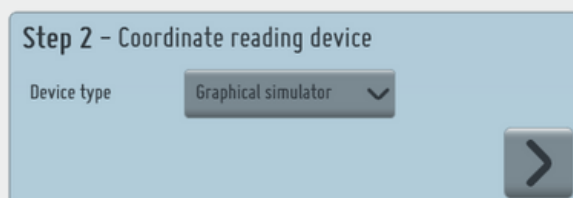


Folder can be setup in Settings > Workspace Settings > User Folder

tag: settings

Graphical Simulator

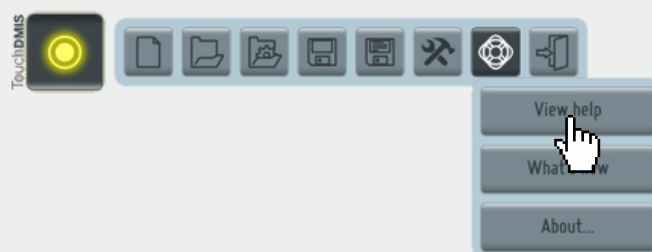
We added a new Graphical Simulator for the offline programming



tag: offline programming

New WebHelp

We update a new version of TouchDMIS WebHelp. You can find it in the TouchDMIS Home toolbar.



tag: help and tutorials

What's new?

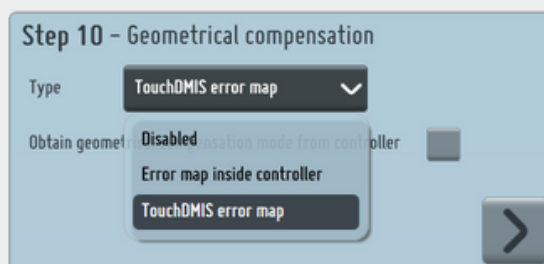
Temperature compensation

Using UCC Server controller it is now possible to apply the manual thermal compensation or the automatic thermal compensation with non-Renishaw embedded thermal sensor

tag: temperature compensation

Geometrical compensation

Added the ability to select the source of the geometrical error mapping



tag: machine setup

Easy Runner 3.4.1

We updated Easy Runner. Here are the new improvements:

- Synchronization with the working folder
- Now you can save and search programs by tag

Program ID

Tag

tag: easy runner

What we have implemented/fixed

- TD-I117 - Wrong CMM model visualization with default model
- TD-I981 - 5-axis con measure - first GoTo
- TD-I986 - Select a not existing SA probe does not rise any error
- TD-I988 - If error during home, does not request to home again
- TD-I924 - Blue screen enabling trial
- TD-I977 - Temperature compensation
- TD-I997 - Fix temperature setting version number
- TD-I1040 - Qualify with I++ Server: impossible to qualify the position of B if A angle is = 0
- TD-I1041 - I++ Server Star qualify in TouchDMIS
- TD-I1046 - The tool selection on start-up select always the actual tool
- TD-I1054 - RTP20 - Error when change position during calibration
- TD-I1055 - RTP20 - Wrong graphical representation
- TD-I1062 - Saving with re-sized window
- TD-I1065 - Error message having two output of the same element
- TD-I1072 - Get speed value from controller
- TD-I1075 - Error while homing
- TD-I1085 - Output in multi-measure
- TD-I1087 - CAD model positioning

- TD-I1094 - Star probe - PH10 rotation with different probe tip
- TD-I1098 - Error in boundaries check
- TD-I1099 - UCC Server in TTP mode - Impossible to assign probe to the port
- TD-I1102 - TouchDMIS error while modifying undefined PH10 angle
- TD-I1104 - Fixed tertiary axis in Machine Setup
- TD-I1105 - Axes selection in Machine Setup
- TD-I1106 - MH20i in I++ Server - Inconsistent graphic with the selected position
- TD-I1108 - Block visualization error with PCS
- TD-I1111 - Missed license ending message
- TD-I1114 - Creation of a sphere's feature point cloud
- TD-I1119 - Fatal error on curve selecting Without Projection option
- TD-I1134 - In the horizontal machine the axis direction settings are lost in the Machine Setup
- TD-I1135 - Wrong parsing of Renishaw temperatures
- TD-I1136 - The temperature mode is reset when entering the Machine Setup
- TD-I1137 - OEM selector for different models
- TD-I1139 - Default folder selection
- TD-I1141 - Error in ARKEY S/N during CC3 configuration
- TD-I1142 - Machine Setup - CC3 Controller Max acceleration value does not updated

- TD-I1147 - Add manual temperature compensation
- TD-I1148 - Add "Check for quadratic error" for RD77 device

Supported Hardware & Drivers

System	Firmware/driver/software version
UCC 2-2, T3, T5, S3, S5	UCC Server 5.7.2
Pantec	Available
CC3	Available
DEVA 004	Devacmmctrl61
AX3 (unit for man. CMMs)	AX3_V4ND_4.10
HEXAGON ARMS	Infinite arm RDS 4.x, Absolute arm RDS 5.x
FARO arms: Platinum, Edge	Faro arm Driver Bundle 6.6.0.15
DEVA MANUAL (DEVA 001 + DEVA 0037)	Devacmmctrl61
LK MCC NMC	Firmware nmc300_34
GRAPHICAL SIMULATOR	Available
API laser tracker: Radian, OTII	SDK RadianPlus-OmniTrackII 5.17.6 (Radian Pro 4.24.16.1)
RD77	Available

PC Specifications

Minimum (manual CMM, small CAD models)

OS	64-bit Windows 10
CPU	Intel Core i5
RAM	8 GB
HARD DRIVE	256 GB SSD
GRAPHICS	2 GB Supporting DirectX 11 or higher, feature level 11
USB	2, USB 2.0 - 3.0 (TouchDMIS license key and CMM communication)
MICROSOFT .NET	4.7.2

Reccomended (CNC, CMM using CAD or a laser scanner)

OS	64-bit Windows 10, Professional
CPU	Intel Core i7
RAM	16 GB
HARD DRIVE	1 TB SSD
GRAPHICS	4 GB Supporting DirectX 12 or Higher, feature level 12 1, 100 Base-T Ethernet port (CMM controller)
USB	1, USB 2.0 (TouchDMIS license key) or 1 USB (or serial RS232) for systems with PH10 controller
MICROSOFT .NET	4.7.9

TouchDMIS

THE MEASURING TOUCH



s.o.l.u.t.i.o.n.s