







# Summary

---

 What's new?	<b>1</b>
 What we have implemented/fixed	<b>6</b>
 Supported Hardware & Drivers	<b>11</b>
 PC Specifications	<b>12</b>

# Additional notes

---

## **New TouchDMIS support channel**

In order to improve the development and the support towards our distributors and customers we have activated a channel entirely dedicated to the support of TouchDMIS.

You can write us to:

**[support@touchdmis.com](mailto:support@touchdmis.com)**

# What's new?

Here's what we have implemented in the new TouchDMIS release

## LK controller integration

LK Controllers series are now integrated in **touch trigger mode** and **continuous scanning mode**



tag: integration

## "Trust the process"

We have added a new qualification cycle with a new algorithm in order to optimize position and move during qualification of star probes.



tag: qualification

# What's new?

## New Machine Setup options

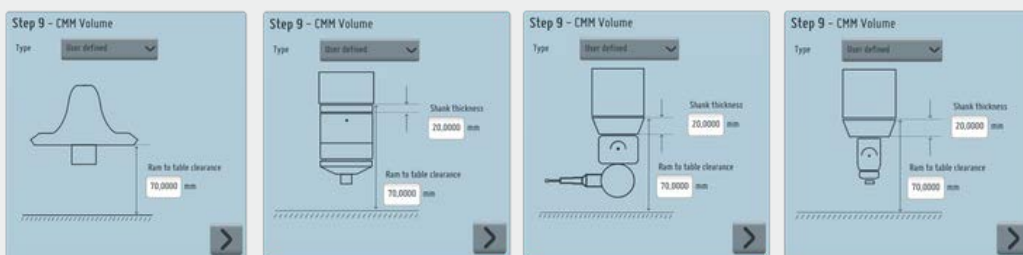
We have added new options for Machine configuration in order to improve the Machine Setup experience.

This including:

### CMMs OEM selection



### CMMs volume



tag: machine setup

# What's new?

## New CMM 3D models

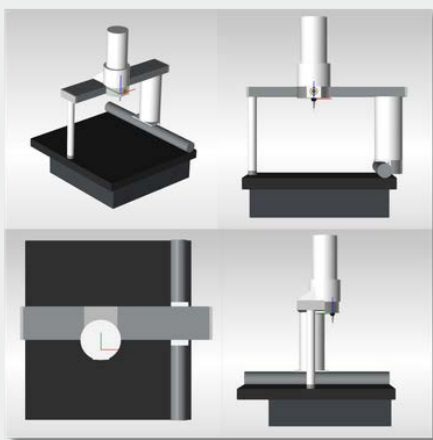
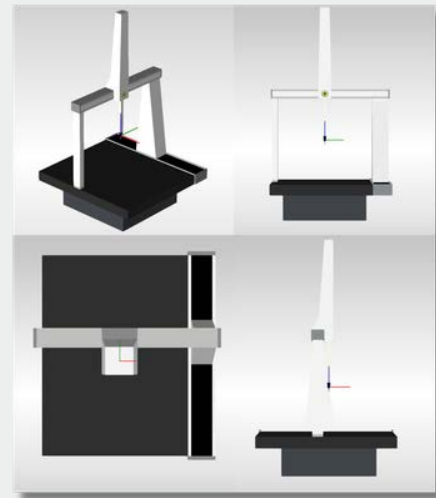
We developed the CMM graphic models for Coord3, LK Metrology, Renishaw and Aberlink



**Coord3 default model**

### LK Metrology default model

plus the full library of original LK CMMs models



**Aberlink default model**

tag: graphical representation

# What's new?

## Manual Deva 037 driver

Added support for the Deva manual board. We also improved the Machine Setup experience

tag: integration

## Manual Head model representation

We improved the graphical representation of the indexable manual heads (RTP20 - MH20 - MH20i and MH8)

tag: graphical representation

## Effective Working Length

We added the effective working length for each probe for non-UCC controllers so that the calibration process can automatically select the best portion of the sphere to be used



New probe tip	
Name	20x4
Length	20,0000 mm
Effective working length	20,0000 mm
Diameter	4,0000 mm

tag: probe management

# What's new?

## Renishaw Equator integration

Now you can use Renishaw Equator Gauging System in TouchDMIS.

This integration lets you take the full advantage of **Renishaw Equator's innovative technology and repeatability.**

You can enable the point collection of Equator directly from the TouchDMIS interface.

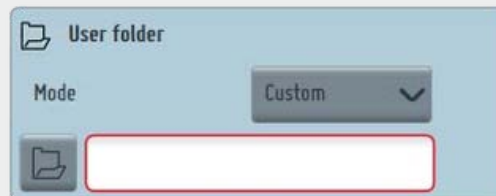


tag: integration

# What's new?

## Default folder selection

The user can now select whether to save a project in the last used folder or to set a default folder to store the programs.



Folder can be setup in Settings > Workspace Settings > User Folder

tag: settings

## Graphical Simulator

We added a new Graphical Simulator for the offline programming



tag: offline programming

## New WebHelp

We update a new version of TouchDMIS WebHelp. You can find it in the TouchDMIS Home toolbar.



tag: help and tutorials

# What's new?

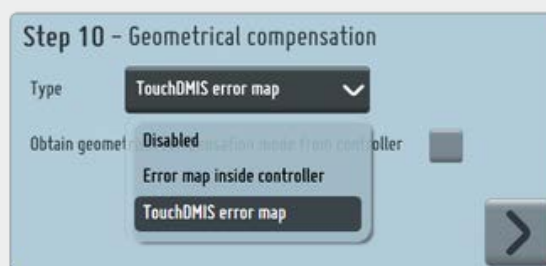
## Temperature compensation

Using UCC Server controller it is now possible to apply the manual thermal compensation or the automatic thermal compensation with non-Renishaw embedded thermal sensor

tag: temperature compensation

## Geometrical compensation

Added the ability to select the source of the geometrical error mapping



tag: machine setup

## Easy Runner 3.4.1

We updated Easy Runner. Here are the new improvements:

- Synchronization with the working folder
- Now you can save and search programs by tag

Program ID

Tag

tag: easy runner

# What we have implemented/fixed

---

- TD-I117 - Wrong CMM model visualization with default model
- TD-I981 - 5-axis con measure - first GoTo
- TD-I986 - Select a not existing SA probe does not rise any error
- TD-I988 - If error during home, does not request to home again
- TD-I924 - Blue screen enabling trial
- TD-I977 - Temperature compensation
- TD-I997 - Fix temperature setting version number
- TD-I1040 - Qualify with I++ Server: impossible to qualify the position of B if A angle is = 0
- TD-I1041 - I++ Server Star qualify in TouchDMIS
- TD-I1046 - The tool selection on start-up select always the actual tool
- TD-I1054 - RTP20 - Error when change position during calibration
- TD-I1055 - RTP20 - Wrong graphical representation
- TD-I1062 - Saving with re-sized window
- TD-I1065 - Error message having two output of the same element
- TD-I1072 - Get speed value from controller
- TD-I1075 - Error while homing
- TD-I1085 - Output in multi-measure
- TD-I1087 - CAD model positioning

- TD-I1094 - Star probe - PH10 rotation with different probe tip
- TD-I1098 - Error in boundaries check
- TD-I1099 - UCC Server in TTP mode - Impossible to assign probe to the port
- TD-I1102 - TouchDMIS error while modifying undefined PH10 angle
- TD-I1104 - Fixed tertiary axis in Machine Setup
- TD-I1105 - Axes selection in Machine Setup
- TD-I1106 - MH20i in I++ Server - Inconsistent graphic with the selected position
- TD-I1108 - Block visualization error with PCS
- TD-I1111 - Missed license ending message
- TD-I1114 - Creation of a sphere's feature point cloud
- TD-I1119 - Fatal error on curve selecting Without Projection option
- TD-I1134 - In the horizontal machine the axis direction settings are lost in the Machine Setup
- TD-I1135 - Wrong parsing of Renishaw temperatures
- TD-I1136 - The temperature mode is reset when entering the Machine Setup
- TD-I1137 - OEM selector for different models
- TD-I1139 - Default folder selection
- TD-I1141 - Error in ARKEY S/N during CC3 configuration
- TD-I1142 - Machine Setup - CC3 Controller Max acceleration value does not updated

- TD-I1147 - Add manual temperature compensation
- TD-I1148 - Add "Check for quadratic error" for RD77 device

# Supported Hardware & Drivers

System	Firmware/driver/software version
UCC 2-2, T3, T5, S3, S5	UCC Server 5.7.2
Pantec	Available
CC3	Available
DEVA 004	Devacmmctrl61
AX3 (unit for man. CMMs)	AX3_V4ND_4.10
HEXAGON ARMS	Infinite arm RDS 4.x, Absolute arm RDS 5.x
FARO arms: Platinum, Edge	Faro arm Driver Bundle 6.6.0.15
DEVA MANUAL (DEVA 001 + DEVA 0037)	Devacmmctrl61
LK MCC NMC	Firmware nmc300_34
GRAPHICAL SIMULATOR	Available
API laser tracker: Radian, OTII	SDK RadianPlus-OmniTrackII 5.17.6 (Radian Pro 4.24.16.1)
RD77	Available

# PC Specifications

## Minimum (manual CMM, small CAD models)

<b>OS</b>	64-bit Windows 10
<b>CPU</b>	Intel Core i5
<b>RAM</b>	8 GB
<b>HARD DRIVE</b>	256 GB SSD
<b>GRAPHICS</b>	2 GB Supporting DirectX 11 or higher, feature level 11
<b>USB</b>	2, USB 2.0 - 3.0 (TouchDMIS license key and CMM communication)
<b>MICROSOFT .NET</b>	4.7.2

## Reccomended (CNC, CMM using CAD or a laser scanner)

<b>OS</b>	64-bit Windows 10, Professional
<b>CPU</b>	Intel Core i7
<b>RAM</b>	16 GB
<b>HARD DRIVE</b>	1 TB SSD
<b>GRAPHICS</b>	4 GB Supporting DirectX 12 or Higher, feature level 12 1, 100 Base-T Ethernet port (CMM controller)
<b>USB</b>	1, USB 2.0 (TouchDMIS license key) or 1 USB (or serial RS232) for systems with PH10 controller
<b>MICROSOFT .NET</b>	4.7.9

# TouchDMIS

THE MEASURING TOUCH



s.o.l.u.t.i.o.n.s